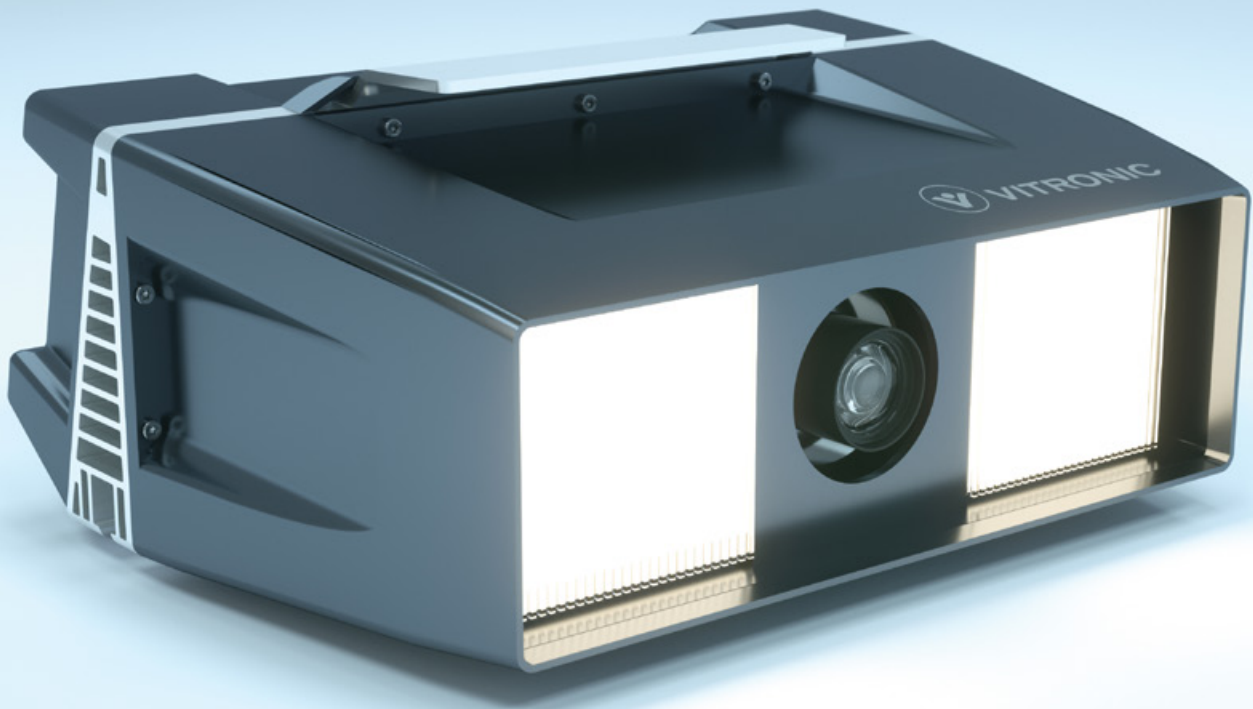




**VITRONIC**  
the machine vision people



VICAM 3S

# THE LINE SCAN CAMERA OF THE NEXT GENERATION

## **An Intelligent Series Standard**

VICAM 3S is setting new standards in data capture for the logistics industry. This all-in-one line scan camera has an extremely high line frequency and the highest focus range on the market. Its key feature, however, is its integrated decoding unit, making it an intelligent core component of your Auto-ID system and ensuring accurate detection and processing of shipment data. [www.vitronic.com](http://www.vitronic.com)

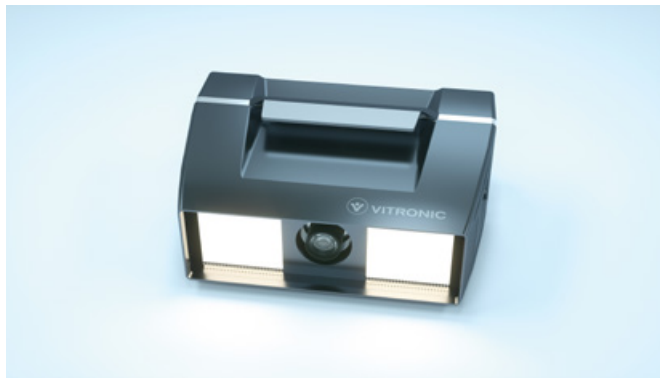
# VICAM 3S AUTO-FOCUS LINE SCAN CAMERA

## Capturing and Processing Data in Real Time

Thanks to high line frequency, a high focus range, and extremely efficient LED lighting technology, VICAM 3S generates high resolution images of packages, large letters, and polybags. The integrated decoding unit reliably detects barcodes and 2D codes. It then processes them and transfers the captured data in real time to the connected goods management system.

## Smart, Small, and Synchronized

VICAM 3S uses an integrated image processing technology and offers easy plug & play operation without requiring an additional computing unit. Its compact size, weighing approximately 40 percent less than previous models, means it is easy to use and requires little maintenance. The result is a high-performance camera system that guarantees superior image quality and reliable data capture in real time, even at higher conveyor speeds and with wider conveyor systems. The captured information is saved by the integrated archiving function for analysis purposes.



VICAM 3S combines an innovative design with ideal functionality

## Performance Data

Conveyor Speed	Max. Resolution
3.0 m/s (600 fpm)	320 dpi
3.8 m/s (750 fpm)	250 dpi
4.3 m/s (850 fpm)	210 dpi

## Technical Data

Conveyor speed	Up to 4.5 m/s
Field of view	1,400 mm
Line frequency	37.8 kHz
Focus range	2,100 mm
Focal length	80/100/135 mm
MTBF	> 80,000 h
MTTR	< 5 min.
Outside dimensions (W x D x H)	460 x 188 x 338 mm
Weight	10 kg
Operating temperature	-10 to 50 °C
Power supply	115 to 230 VAC (+/- 20 %), 50 to 60 Hz